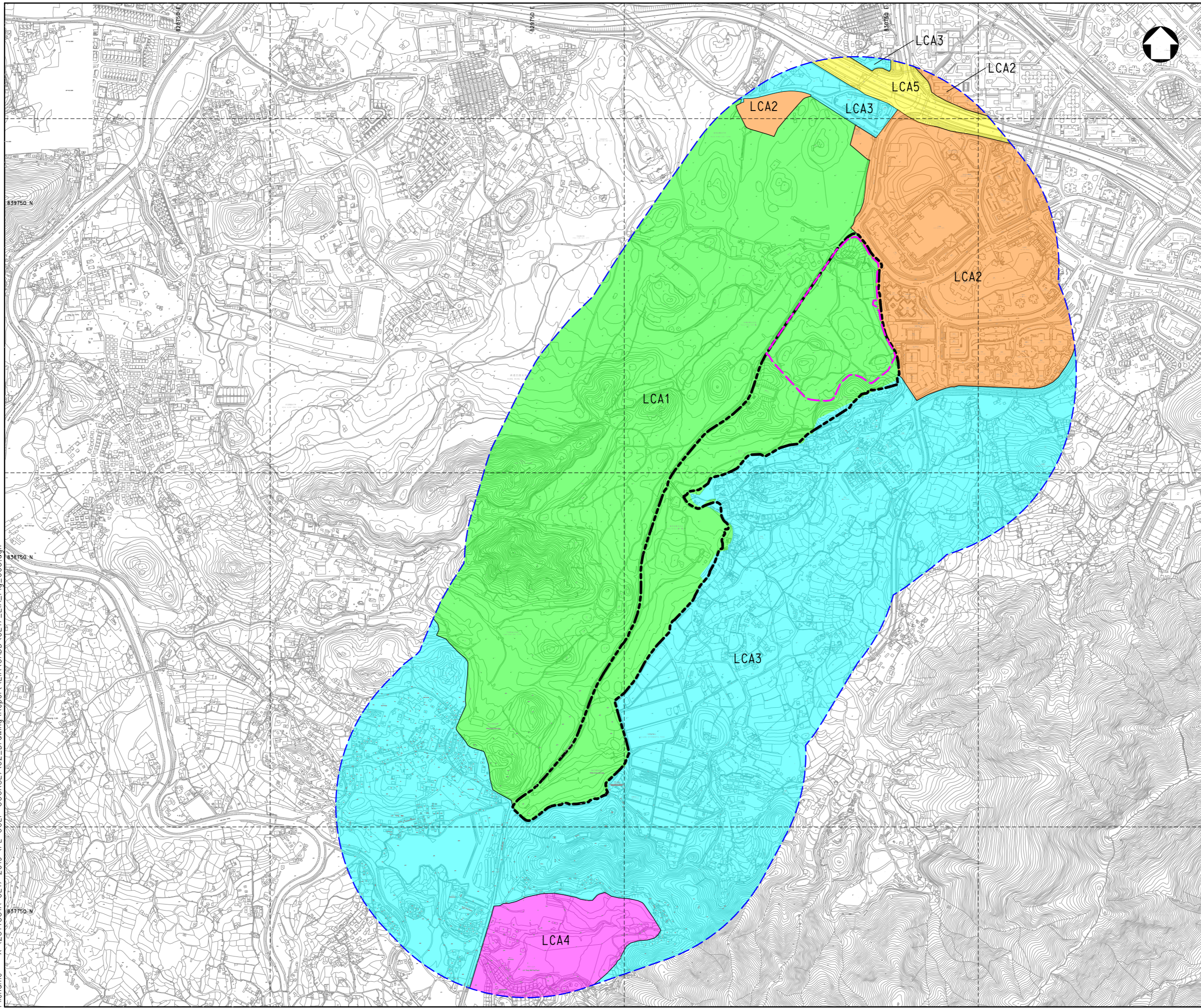


Date : 10/5/2022
 Filename : X:\2514\331A_CE17-2019 (FL GOLF COURSE)\02_Drawing\Report\EIA\CADD\CE17_EIA_Fig_005.dgn



- NOTES :
1. ALL DIMENSIONS ARE IN MILLIMETRES UNLESS OTHERWISE STATED.
 2. ALL LEVELS ARE IN METRES (M) AND RELATIVE TO HONG KONG PRINCIPAL DATUM (mPD).

- LEGEND :
- POTENTIAL DEVELOPMENT AREA
 - 500m ASSESSMENT AREA
 - PROPOSED PUBLIC HOUSING DEVELOPMENT
 - LCA1 GOLF COURSE LANDSCAPE
 - LCA2 RESIDENTIAL URBAN LANDSCAPE
 - LCA3 URBAN PERIPHERAL VILLAGE LANDSCAPE
 - LCA4 RESIDENTIAL URBAN FRINGE LANDSCAPE
 - LCA5 TRANSPORTATION CORRIDOR LANDSCAPE

Rev	Description	By	Date
Consultant			
Project title			
AGREEMENT NO. CE17/2019 (CE) TECHNICAL STUDY ON PARTIAL DEVELOPMENT OF FANLING GOLF COURSE SITE - FEASIBILITY STUDY			
Drawing title			
LANDSCAPE CHARACTER AREA PLAN			
Drawing no.		Rev.	
FIGURE 11.3		-	
Drawn	Date	Checked	Approved
CAD	31/10/19	LW	EW
Scale	Status		
1:10000 (A3)	-		

© COPYRIGHT RESERVED

土木工程拓展署
 CIVIL ENGINEERING AND DEVELOPMENT
 DEPARTMENT
 北拓展處
 NORTH DEVELOPMENT OFFICE